

CALL FOR PROPOSALS

BUILDING TOGETHER

an Inclusive Society



Fall 2026 (AP14)

Companion Guide

Intersectoral Participatory
Research Program



Intersectoral Research Initiative
Toward a More Inclusive Quebec Society



CALL FOR PROJECTS 14 / Fall 2026

Project submission deadline: **November 2, 2026, 5:00 p.m.**

Email address: info@societeinclusive.ca

FOREWORD

Mission of Inclusive Society

The intersectoral research initiative “*Toward a More Inclusive Quebec Society*,” also known as Inclusive Society, brings together and mobilizes stakeholders from both the research and community sectors to develop innovative intersectoral participatory research projects. Its goal is to create more inclusive physical and social environments for people of all ages living with disabilities, whether motor, sensory, intellectual, cognitive, language-related, or related to neurodiversity or aging.

Description of the Inclusive Society Model

Inclusive Society was established in 2017. Since 2023, in response to converging needs for the social impact of research, it has been supported by seven research infrastructures funded by the Fonds de recherche du Québec (FRQ): le Centre interdisciplinaire de recherche en réadaptation et intégration sociale ([Cirris](#)), le Centre de recherche interdisciplinaire en réadaptation ([CRIR](#)) du Montréal métropolitain, le Regroupement stratégique en Ingénierie de la réadaptation ([INTER](#)), le Réseau québécois de recherche sur le vieillissement ([RQRV](#)), le Réseau de recherche en santé de la vision ([RRSV](#)), le Réseau pour transformer les soins en autisme ([RTSA](#)) et le Réseau communautés rurales et éloignées en santé ([CARES](#)). Six non-profit organizations (NPOs), representing individuals living with various types of disabilities, contribute to the shared governance model, which is a central feature of the intersectoral participatory research approach promoted by *Inclusive Society*.

The [Mirella and Lino Saputo Foundation](#) and the [Azrieli Foundation](#) each contribute \$250,000 per year (2023–2028) to primarily support the biannual calls for proposals. They have partnered with *Inclusive Society* due to the strong alignment between their philanthropic missions and the objectives of *Inclusive Society*, which aim to sustainably transform practices related to the inclusion of people living with disabilities.

Table of Contents

Concepts	4
1. Program Overview	7
1.1 Context	7
2. Eligibility Criteria	10
2.1 Eligible Projects	10
2.2 Eligible Teams	15
3. Financial Aspects	19
3.1 Total Budget	19
3.2 Eligible Expenses	19
3.3 Ineligible Expenses	20
3.4 Mitacs Accelerate	21
4. Submitting an Application	23
4.1 Procedure	23
4.2 Required Documents	23
5. Support and Guidance	25
5.1 Personalized Support	25
5.2 Additional Resources	25
6. Application Evaluation	27
6.1 Evaluation Process	27
6.2 Evaluation Criteria	28
7. Implementation and Reporting	31
7.1 Financial Contribution	31
7.2 Monitoring and Evaluation	31
Notes and References	32
8. APPENDICES	34
APPENDIX 1 — Evaluation Grid	34

Concepts

Innovation

Innovation is “the implementation of an idea that introduces a new element and successfully meets a need or demand.”¹ It is also “a structured process of change that introduces something new or improved and requires change management in order to be adopted and generate value.”² Innovation enables the development of new knowledge and solutions that respond more effectively and sustainably than existing approaches to a clearly identified need.

Participatory Research

“Participatory research refers to a process aimed at developing knowledge [...] conducted in such a way that its methods, results, and conclusions may be subject to critical review by the relevant research community.”³ Participatory research is a scientific approach that actively involves the individuals concerned at every stage of the research process. It aims to co-produce useful knowledge grounded in lived realities and oriented toward social transformation.⁴

Functional Diversity

The concept of functional diversity is used to describe the diversity of abilities related to mobility, intellectual and cognitive functioning, speech and language, vision, hearing, or other senses. Abilities differ from one individual to another and may vary depending on age, functional limitations, illness, pregnancy, or other factors.⁵

Intersectorality

Intersectoral research, as promoted by the Fonds de recherche du Québec, aims to go beyond the mere combination or juxtaposition of multiple disciplines and sectors, to address a problem or engage with a research topic. Intersectoral collaboration in research can take different forms:

- ✓ Through the joint design and development, within the project, of issues that involve questions or research topics shared among representatives of different sectors;
- ✓ Through the development of an innovative methodology adapted to each issue and integrating approaches from each of the sectors represented in the project;

- ✓ Through team composition: researchers from at least two of the three major sectors covered by the FRQ, namely: Nature and Technology, Health, and Society and Culture;

Through the inclusion of all spheres of society, using collaborative research approaches with user groups and citizens, the creation of Living Labs, and the sharing of both scientific and experiential knowledge to promote the integration of research-driven innovations into Quebec society.

Section 1

Program Summary

1

1. Program Overview

1.1 Context

The *Inclusive Society* Intersectoral Participatory Research Program (*the Program*) provides financial, material, and human resources to support innovative intersectoral participatory research projects. These projects must generate concrete changes across various aspects of the lives of people living with disabilities, while also contributing to the transformation of related ecosystems, including families, community organizations, and public institutions. These projects must implement solutions aimed at reducing the environmental and social barriers that individuals with disabilities encounter in carrying out their daily activities and life habits.

Program Objectives

To produce concrete changes in the lives of people with disabilities by transforming the ecosystems surrounding them and reducing the environmental and social barriers that limit the achievement of their life habits.

Funding Partners

This call for proposals is made possible through the support of the Mirella & Lino Saputo Foundation, the Azrieli Foundation, and Mitacs. We would like to thank them for their support, which helps improve the inclusion of people living with disabilities and contributes to making our communities more inclusive.



Supported Projects

Inclusive Society supports participatory research projects that are grounded in real-world practice settings and demonstrate strong potential for social innovation. These projects aim to meaningfully transform practices, develop new inclusive approaches, and generate useful knowledge to address persistent issues related to inclusion and accessibility.

The program prioritizes structured approaches to exploration and experimentation, enabling research teams to better understand a problem, explore new avenues, and test or document approaches in real-world contexts that are often marked by uncertainty.

Partnerships

Partnerships between the **community sector** and the **research sector** are a central component of all projects supported by the *Inclusive Society* Program, ensuring that research is closely aligned with and serves community needs.

Duration and Timeline

Funded projects have a **maximum duration of 18 months**.

They must begin on **April 1, 2027**, and be completed no later than **October 31, 2028**. Except in exceptional circumstances, no extensions will be granted.

Budget

The maximum funding available per project is **\$35,000**.

This funding is awarded by Université Laval to the institution affiliated with the project's lead researcher.

Teams may also receive support in submitting a simultaneous application for complementary funding through the Mitacs Accelerate program⁶. Teams are encouraged to contact the *Inclusive Society* team for guidance throughout this process.

Section 2

Eligibility Criteria

2

2. Eligibility Criteria

Criteria are established to define the eligibility of both the projects and the teams that submit them. Each criterion must be met and clearly demonstrated in the application form; otherwise, the application will not be considered.

2.1 Eligible Projects

A1. Alignment with *Inclusive Society* Themes

Proposed research projects must promote scientific complementarity and be structured around major intersectoral research themes:

- ✓ Physical environment and personal mobility;
- ✓ Social environment;
- ✓ Health and adaptation–rehabilitation;
- ✓ Attitudes, biases, and discrimination.

The following figure presents a general description of each of these themes.

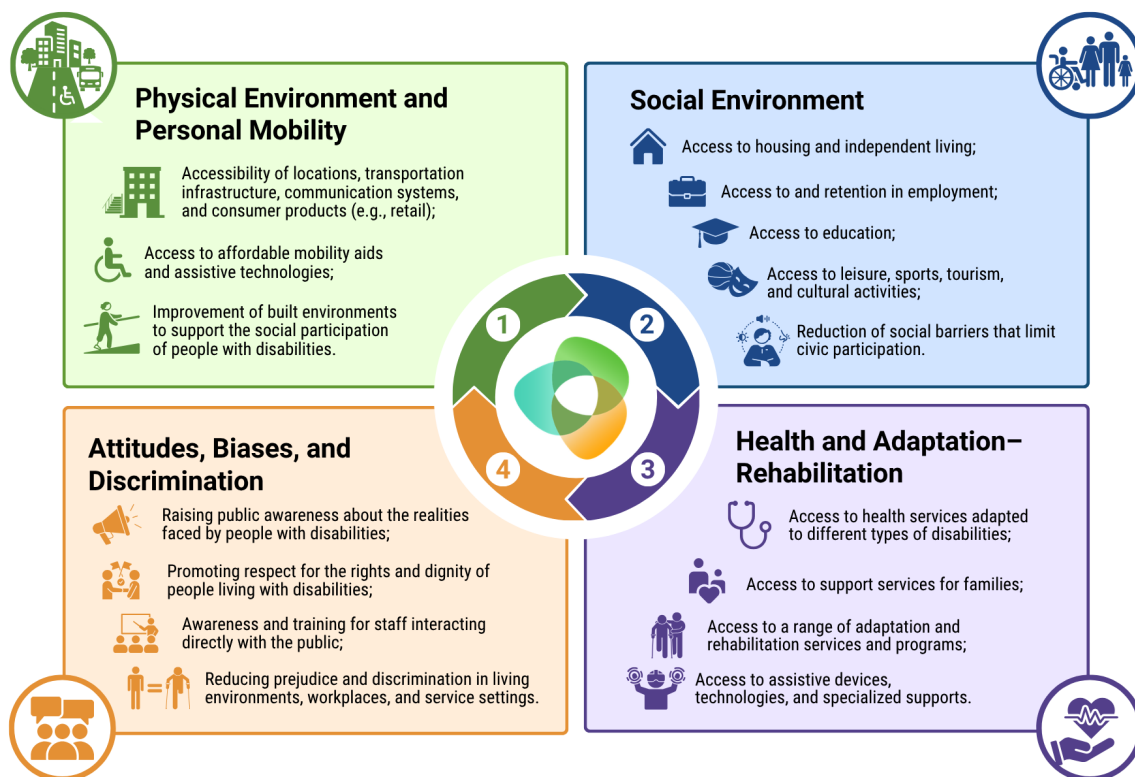


Figure 1: The 4 themes of the Inclusive Society Program

Table 1: Themes of the Inclusive Society Program

Theme 1. Physical Environment and Personal Mobility

This theme refers to:

- ✓ Accessibility of locations, transportation infrastructure, communication systems, and consumer products (e.g., retail);
- ✓ Access to affordable mobility aids and assistive technologies;
- ✓ Improvement of built environments to support the social participation of people with disabilities.

Theme 2. Social Environment

This theme refers to:

- ✓ Access to housing and independent living;
- ✓ Access to and retention in employment;
- ✓ Access to education;
- ✓ Access to leisure, sports, tourism, and cultural activities;
- ✓ Reduction of social barriers that limit civic participation.

Theme 3. Health and Adaptation–Rehabilitation

This theme refers to:

- ✓ Access to health services adapted to different types of disabilities;
- ✓ Access to support services for families;
- ✓ Access to a range of adaptation and rehabilitation services and programs;
- ✓ Access to assistive devices, technologies, and specialized supports.

Theme 4. Attitudes, Biases, and Discrimination

This theme refers to:

- ✓ Raising public awareness about the realities faced by people with disabilities;
- ✓ Promoting respect for the rights and dignity of people living with disabilities;
- ✓ Awareness and training for staff interacting directly with the public;
- ✓ Reducing prejudice and discrimination in living environments, workplaces, and service settings.

A2. Project Based on a Need Identified by at Least One Community Organization

Projects must respond to a need clearly expressed by one or more community organizations working with people living with disabilities or advocating for their rights. The need must therefore be identified by the partner organization and not arise solely from a theoretical or strictly academic reflection.

As this is an eligibility criterion, this requirement must be clearly demonstrated in both the project description and the partner organization's letter of commitment.

The letter of commitment must specify:

- ✓ The organization's role in identifying the need;
- ✓ Its participation in the design and implementation of the project;
- ✓ How the project's results will be integrated into its practices or services.

A3. Addressing the Needs of People Living with Disabilities

From this perspective, the project must aim to respond in a tangible and inclusive way to the needs of people living with disabilities, with the objective of:

- ✓ Producing concrete changes across various aspects of their lives;
- ✓ Supporting the transformation of related ecosystems (family caregivers, community organizations, public institutions);
- ✓ Implementing solutions that reduce the environmental and social barriers encountered by people living with disabilities in carrying out their daily activities and life habits.

Important: Projects focused exclusively on mental health issues or prevention are not eligible.

A4. Alignment with an Innovation Approach

An innovation project must address an issue for which:

- ✓ Existing solutions have been tested and found to be insufficient or difficult to apply in a community context;
- ✓ Areas of uncertainty remain, justifying an exploratory, scientific, or experimental approach;
- ✓ The generation of new knowledge, new practices, or new analytical frameworks is necessary.

In this context, projects must align with at least one of the three phases of the innovation process illustrated in the diagram⁷ below:

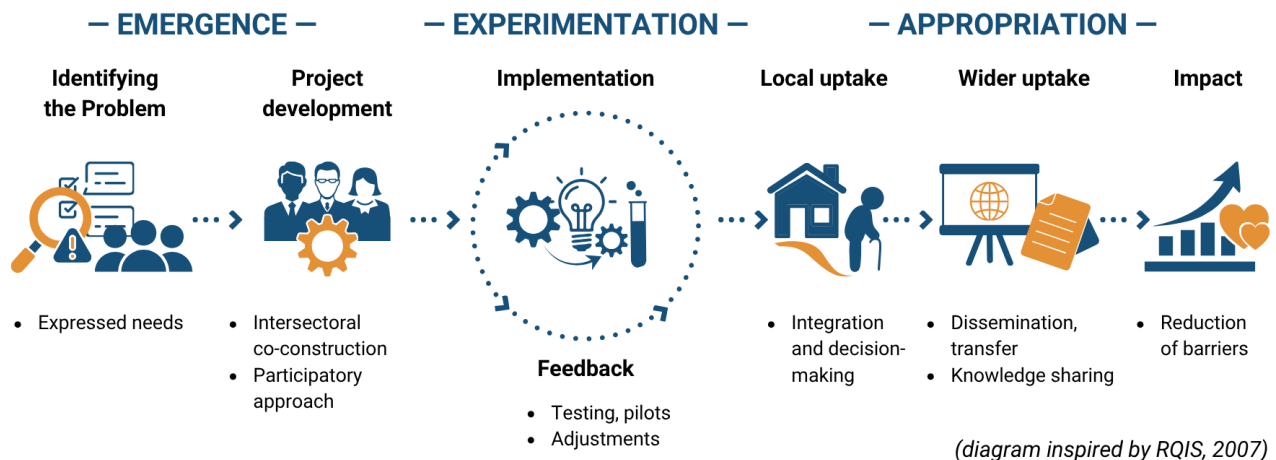


Figure 2: Social Innovation Process

The emergence phase involves identifying the problem and proposing potential solutions.

- ✓ Example of an eligible project: a project aimed at understanding, documenting, or explaining why certain practices succeed or fail.

The experimentation phase involves a scientific approach to testing and piloting solutions to address the identified issue.

- ✓ Example of an eligible project: an experimentation or prototyping project.

The appropriation phase includes the adoption of new knowledge and its integration into practice by staff. It also encompasses actions aimed at ensuring that improvements are shared and sustained over time.

- ✓ Example of an eligible project: a project that tests the feasibility, adaptability, or transferability of an approach in a community context.

Additional Notes:

- The Program **does not aim** to fund:
 - The continuous improvement of practices that are already well documented;
 - The direct implementation of proven solutions without introducing new questions or perspectives;
 - Projects whose results are already known or widely documented elsewhere, without demonstrating a specific local need.
- An innovation project does not necessarily involve the development of physical products or new technologies. Projects with an intangible scope (knowledge, analytical frameworks, success factors, methodologies) may also be considered innovative;
- The full implementation of a solution is not required; however, the added value of the learning generated must be clearly demonstrated, and the application must indicate how the developed solution could eventually be implemented.

2.2 Eligible Teams

B1. Tripartite Teams and Inclusion of Lived Experience

Projects submitted under the Program must be based on a partnership involving two sectors.

Minimum required composition:

- **One researcher responsible for submitting the project;**
- **One researcher serving as co-lead of the project;**
- **One representative from a community organization;**
- At least **one individual with lived experience**, that is, a person from the functional diversity community (see definition p.5) whose lived experience can meaningfully contribute to the project.

Other Team Members

- There is no limit to the total number of team members;
- The team may include additional collaborators from diverse backgrounds and sectors, depending on the needs of the project and required expertise (e.g., citizens, private sector representatives, researchers, researchers outside Quebec, students, etc.).

The commitment of each partner is expected at every stage of the project, although the nature and extent of contributions may vary depending on each party's expertise, roles, and capacities.

B2.1. Eligibility of the Research Sector

The contribution of the research sector ensures that new knowledge is generated through a scientific approach, a transparent and reproducible methodology, and an ethical framework.

The project team must include at least one principal researcher holding one of the statuses **1 to 3 or 4(a) recognized by the Fonds de recherche du Québec**⁸.

At least one of the two principal researchers must be affiliated with one of the *Inclusive Society* partner research centers, networks, or strategic groups:

[Centre de recherche interdisciplinaire en réadaptation du Montréal métropolitain \(CRIR\)](#)

[Centre interdisciplinaire de recherche en réadaptation et intégration sociale \(Cirris\)](#)

[Réseau pour transformer les soins en autisme \(RTSA\)](#)

[Réseau québécois de recherche sur le vieillissement \(RQRV\)](#)

[Réseau en recherche en santé de la vision \(RRSV\)](#)

[CommunAutés Rurales et Éloignées en Santé \(CARES\)](#)

[Regroupement stratégique en Ingénierie de technologies interactives en réadaptation \(INTER\)](#)

Important

As previously mentioned, each principal researcher may submit only one project per year, regardless of the status of previous or ongoing projects.

A verification of reporting compliance for previously funded projects will be conducted, and any unjustified delay in reporting may result in ineligibility for the present call for proposals.

Postdoctoral fellows may not act as principal investigators but may serve as co-researchers within the research team.

Teams may also collaborate with a researcher based outside Quebec; however, that individual will not be eligible to receive research funding.

B2.2. Eligibility of the Community Sector

Community organizations and their networks play a central role in identifying the barriers experienced by individuals with functional limitations or who are part of the functional diversity community.

If multiple community partners are involved in the project, one must be designated as the **lead partner**.

To be eligible as the lead partner of the project, the organization must:

- Be a **non-profit organization** (NPO) legally incorporated with the Registraire des entreprises du Québec and be in good standing with it;
- Have its head office located in the province of Quebec and carry out the majority of its activities there;
- Be governed by a democratically elected board of directors composed primarily of individuals residing in Quebec who contribute to the organization on a volunteer basis;
- Provide direct services to individuals with functional limitations or who are part of the functional diversity community, advocate for their rights, and/or have a mission to promote and represent their interests;
- Participate in only one funding application per year as the lead partner.

Notes:

- Other team members from the community sector (collaborating partners) are not subject to these requirements;
- Private companies and public, parapublic, or governmental bodies (e.g., CIUSSS, municipalities) are not eligible as lead partners but may contribute as other team members;
- Associations of organizations and non-profit social economy enterprises are also eligible as lead partners.

B2.3. Inclusion of a Person with Lived Experience

In addition to researchers and partner organizations, the team **must include at least one** person with lived experience, that is, a person living with one or more disabilities.

Teams are encouraged to ensure fair and appropriate compensation for this individual in recognition of their contribution to the research project.

Section 3

Financial Aspects

3

3. Financial Aspects

3.1 Total Budget

The maximum amount available per project is **\$35,000**.

This funding is intended to cover research activities as well as those related to partner participation in the implementation of the project.

Budget considerations:

- A minimum amount of \$10,000 must be allocated to activities carried out by the community or associative partners involved in the project;
- Funds will be disbursed by Université Laval as a financial contribution to the institution affiliated with the project's principal investigator;
- Funded activities must be carried out within a maximum period of 18 months.

3.2 Eligible Expenses

Eligible expenses are those directly related to the execution of the project and partner participation, including:

- Salaries and benefits for personnel involved, limited to the time dedicated to the project;
- Scholarships or top-up funding for college or university students (undergraduate, master's, doctoral) and postdoctoral fellows;
- Fees and compensation for community and associative partners involved in the project;
- Fees and compensation for individuals with lived experience (excluding those representing the community and research sectors);
- Fees for expert consultants and professionals associated with the project;
- Purchase or rental of equipment used exclusively for the project, or a portion of the cost proportional to its use for the project (maximum \$1,000);
- Training and professional development costs for personnel required to use specialized equipment or facilities related to the project;

- Rental of spaces used exclusively for the project, or a portion of the cost proportional to project-related use;
- Purchase of essential materials (e.g., stationery, office supplies);
- Promotion and communication costs;
- Travel and accommodation expenses related to the project.

3.3 Ineligible Expenses

The following expenses are not eligible:

- Indirect research costs;
- Expenses not directly related to the project;
- Routine or operating expenses, interest charges, borrowing costs, or depreciation;
- Activities already funded under another grant program;
- Costs related to the purchase or rental of equipment or vehicles not used exclusively for the project;
- Capital assets and related depreciation costs;
- Capital expenditures or infrastructure costs;
- Vehicle maintenance or repair costs;
- Expenses incurred prior to the signing of the agreement with Inclusive Society or after the project end date.

3.4 Mitacs Accelerate

Teams that wish to do so may receive support in submitting an application for complementary funding through the [Mitacs Accelerate program](#), thereby enhancing the funding provided by the *Inclusive Society* Program. This process is entirely optional and depends on the needs of the team.

Mitacs Accelerate is a research internship program that enables the compensation of students and postdoctoral fellows involved in the project. It takes the form of grants—referred to as internship units—valued at \$7,500 each for a duration of 4 to 6 months (\$10,000 for postdoctoral fellows), each lasting 4 to 6 months. To apply to Mitacs, each team determines the number of internship units required for their project. **Under *Inclusive Society* calls for proposals, a maximum of three units may be requested.**

Teams that choose this option must indicate it in the project application form as well as in their detailed budget. They are also encouraged to seek guidance by contacting us at: info@societeinclusive.ca

Section 4

Submitting an Application

4

4. Submitting an Application

The deadline for submitting projects is **November 2, 2026, at 5:00 PM.**
No applications submitted after this date and time will be considered.

4.1 Procedure

To submit an application under the *Inclusive Society* Program call for proposals, teams must follow these steps:

- **Identify team members (principal investigators, community partner, person with lived experience, other team members);**
- **Complete all required documents** (see Section 4.2 — Required documents);
- **Prepare a .zip file** containing all required documents;
- **Submit the complete application package** by email to: info@societeinclusive.ca

Only complete applications received before the deadline and meeting all requirements will be evaluated.

4.2 Required Documents

The following documents must be included:

- Project proposal form
- Detailed project budget
- Curriculum vitae of the principal investigator and co-investigator
- Letter of commitment from the project's lead partner
- Additional letters of support (optional)

Templates required to complete these documents are available at www.societeinclusive.ca (download the project submission toolkit). Regardless of format, all documents must be written in French or English.

Section 5

Support and Guidance

5

5. Support and Guidance

5.1 Personalized Support

A personalized support service, provided by the Inclusive Society team, is available and includes:

- **Partner matching support:** connecting individuals interested in submitting a project with partners from other sectors and/or with complementary expertise to form a team;
- **Application preparation support:** including, among other things, verification of project eligibility, methodological guidance, sharing of best practices, and assistance in developing the project proposal;

This service is offered through one-on-one meetings, document review and feedback, email exchanges, and active networking support. **Contact:** info@societeinclusive.ca

5.2 Additional Resources

- **Official launch of the call for proposals** (virtual): June 30, 2026, from 11:30 AM to 12:30 PM
 - The session will be recorded.
- **Networking activities** (virtual): September 16, 2026, from 10:30 AM to 12:00 PM
- **Webinar “How to Prepare the Budget?”** (virtual): October 6, 2026, from 11:30 AM to 12:30 PM
 - This webinar will provide information on the Program’s budget considerations.

Registration for activities, additional information, and the FAQ are available at:
please consult <https://societeinclusive.ca/>

For any other questions, please contact us at: info@societeinclusive.ca

Section 6

Application Evaluation

6

6. Application Evaluation

6.1 Evaluation Process

The evaluation process is designed to ensure a fair, consistent selection aligned with the objectives of the Program. It consists of three stages:

Step 1 — Eligibility and Compliance Review

This step ensures that projects meet the eligibility criteria (Section 2) and comply with submission requirements (Section 4).

Only projects deemed eligible and compliant will proceed to evaluation.

Step 2 — Pre-evaluation of Projects

A committee composed of the scientific leadership of Inclusive Society and funding partners conducts a pre-evaluation of applications to assess their relevance, alignment with the Program's themes, and compliance with eligibility criteria.

Step 3 — Project Evaluation

Projects are evaluated by an independent evaluation committee composed of representatives from both the research and community sectors. This committee reviews each application based on the evaluation criteria (Section 6.2). Applicants will be informed of the evaluation outcome (selected, selected with conditions, or not selected).

Projects selected will be recommended for funding to the decision-making bodies of *Inclusive Society*.

6.2 Evaluation Criteria

Eligible and compliant projects will be evaluated based on the following **five criteria**:

- **E1. Demonstration of need and project relevance**
- **E2. Innovation approach and impact potential**
- **E3. Scientific quality of the approach**
- **E4. Project feasibility**
- **E5. Team expertise and participatory approach**

E1. Demonstration of Need and Project Relevance

This criterion assesses the **relevance** of the project in relation to the identified needs and the objectives of the *Inclusive Society* Program.

Applicant teams must demonstrate how their project addresses a specific need clearly identified by the lead partner organization. This demonstration must include an analysis of the partner's needs as well as a justification of the strategies chosen to address them.

E2. Innovation Approach and Impact Potential

This criterion evaluates the extent to which the project is grounded in a coherent and necessary **innovation approach**, whose value translates into concrete, significant, and sustainable **impacts** on the inclusion of people living with disabilities.

More specifically, the project must demonstrate that existing solutions have been explored or considered but have proven insufficient, inappropriate, or inapplicable in the community context, thereby justifying the need for an innovation approach. The project must then clearly highlight the **novelty** it introduces by moving beyond existing practices.

The project's **impact potential** on the evolution of practices may be immediate or may unfold over time. This impact must be clearly demonstrated and include:

- A **description of the expected outcomes** for individuals with functional limitations or who are part of the functional diversity community, in terms of accessibility, inclusion, and improvements to services or practices;
- **How** the project results and lessons learned will be shared, integrated, and sustained through the **planned deliverables** and the **knowledge transfer** strategy.

The impact on the social inclusion of people living with disabilities must be described in detail, highlighting the expected benefits for these individuals. This impact may be immediate or projected over time. Teams must demonstrate their ability to assess this impact and adapt their approach based on results obtained throughout the project. Where the expected impact on social inclusion is not immediate, the team must clearly describe the steps and actions planned to achieve it.

E3. Scientific Quality of the Approach

The project must clearly demonstrate the quality and relevance of the proposed scientific approach. This includes the use of rigorous and appropriate methods based on solid theoretical foundations, as well as careful attention to ethics and research integrity.

Projects will be assessed based on their ability to produce credible, transferable results that meet the initial objectives while contributing to the advancement of knowledge in the field.

E4. Project Feasibility

The project will be evaluated on its ability to present a **realistic and coherent plan**, taking into account the human, material, financial, and time resources required for implementation.

The evaluation will consider both the feasibility of activities related to the **scientific approach** and the overall **operational feasibility** of the project within its real-world context.

A progressive and realistic plan, including intermediate objectives, will be viewed positively.

E5. Team Expertise and Participatory Approach

This criterion assesses the quality and coherence of the proposed partnership, both within the project team and in the involvement of the sectors expected to integrate the project's results.

It examines the composition of the team, ensuring that the required **complementary expertise from two or more sectors** is adequately represented and effectively mobilized.

The criterion also evaluates **collaboration within the team**, particularly by assessing the distribution of roles. Projects must go beyond simply bringing partners together and demonstrate active engagement at every stage of the project, while ensuring that responsibilities and tasks are allocated in a manner consistent with each member's expertise.

Finally, projects will be evaluated based on their ability to establish a strong and sustainable partnership and to support the adoption and long-term sustainability of the proposed solution beyond the research project.

Section 7

Implementation and Reporting

7

7. Implementation and Reporting

7.1 Financial Contribution

An award agreement will be signed between *Inclusive Society* and the institution affiliated with the project's principal investigator. This agreement specifies the expectations, responsibilities, and administrative conditions associated with the funding. This funding is non-renewable and non-transferable.

7.2 Monitoring and Evaluation

Funded projects will benefit from personalized support to ensure the proper execution of activities and to optimize knowledge mobilization strategies.

With respect to monitoring and evaluation, the following expectations apply to all projects:

- **A kick-off meeting** to review project monitoring procedures and available support (April 2027);
- **A mid-term review and follow-up meeting** to assess progress toward objectives and expected results (January 2028);
- **Prompt communication of any issues that may compromise the completion of the project.** Any changes to planned activities must be approved in advance by *Inclusive Society*;
- **Participation in an annual experience-sharing activity** (FORUM);
- **A final review and closing meeting** (October 2028);
- **Submission of a detailed financial report**, demonstrating the use of allocated funds and confirming compliance with the funding conditions, along with a **summary of the main outcomes observed**, to be submitted within 30 days of the project's completion (November 2028).

Notes and References

¹ Beaudet, G., & Shearmur, R. (2019). *L'innovation municipale : Sortir des sentiers battus*. Montréal: Les Presses de l'Université de Montréal, 120 p.

² Tidd, J., & Bessant, J. (2019). *Innovation Management* (6th ed., French translation). Brussels: De Boeck Supérieur.

³ Institut national d'excellence en santé et en services sociaux (INESSS). (2024). *Lexicon on Innovation* (methodological document prepared by P. Lehoux and G. Plamondon). INESSS.

⁴ Definition inspired by the document “*Le modèle de recherche participative d'Accès savoirs*”, available at: <https://www.accessavoirs.ulaval.ca/sites/accessavoirs.ulaval.ca/files/uploads/modele-de-recherche-as.pdf>

⁵ City of Montréal, Diversity and Social Inclusion Department. (2024). *Municipal Plan for Universal Accessibility 2024–2030*, p. 11. Montréal: City of Montréal. https://portail-m4s.s3.montreal.ca/pdf/SDIS_Plan_AU_2024_remedie_1.pdf

⁶ Mitacs Accelerate is a research internship program that provides funding for students and postdoctoral fellows involved in research projects. Further details are available at: <https://www.mitacs.ca/fr-ca/nos-programmes/acceleration/>

⁷ Source: Diagram inspired by the Québec Social Innovation Network, *Acteurs et processus d'innovation sociale au Québec* (2007), available online at: <https://www.rqis.org/innovation-sociale/>

⁸ Fonds de recherche du Québec. (2025). *Common General Rules (CGR) — Definitions: statuses and roles*, pp. 6–8. Government of Québec. https://frq.gouv.qc.ca/app/uploads/2025/10/rgc_2025.pdf

APPENDICES

8

8. APPENDICES

APPENDIX 1 — Evaluation Grid

Evaluation Criteria

Weighting

E1. Demonstration of Need and Project Relevance

/50

E1.1 Clarity and Relevance of the Identified Need

Guiding questions:

- Are the needs and issues experienced by people living with disabilities clearly identified?
- Are the needs and issues of the community sector clearly identified?

Has the need been analyzed using an intersectional approach, taking into account the realities of groups and individuals living at the intersection of multiple forms of discrimination?

E1.2 Project Relevance and Alignment with the Program

Guiding questions:

- How will the project results address the identified need?
- Is the project clearly aligned with at least one of the four Program themes?

How does the project contribute to advancing the inclusion of people living with disabilities across all areas of society?

E2. Innovation Approach and Impact Potential

E2.1 Innovative Nature of the Project

Guiding questions:

- How does the project go beyond improving existing practices and contribute to generating new knowledge, practices, or insights?
- What specific challenge does the project address?
- What steps have been taken to determine whether a solution does not already exist elsewhere?

Considering the different phases of innovation, how does the project fit within a trajectory that leads to tangible impact?

E2.2 Quality of the Knowledge Mobilization Strategy and Sustainability Potentia

Guiding questions:

- How does the knowledge mobilization strategy promote the appropriation, transferability, and long-term integration of results within the lead partner organization and other relevant settings?
- Do the selected knowledge mobilization activities take into account the capacities, needs, roles, and contexts of the individuals and teams expected to use them?

If the expected impact is not immediate, how will the project results contribute to progress over time?

E3. Scientific Quality of the Approach

/50

E3.1 Conceptual Framework and Strong Theoretical Foundations

Guiding questions:

- Is the project grounded in an appropriate review of existing scientific literature?

Are the concepts, theories, or models used clearly defined and consistent with the research problem?

E3.2 Rigorous and Appropriate Methodology to Achieve Project Objectives

Guiding questions:

- Is the research question or hypothesis clearly formulated?
- Is the methodology appropriate given the project's objectives?
- Are the selected measurement tools and data collection parameters relevant?

Does the data analysis consider factors that help capture realities and potential barriers?

E4. Project Feasibility

E4.1 Feasibility of the Scientific Approach

Guiding questions:

- Where applicable, does the timeline take into account delays associated with ethical approval?
- Is the recruitment target realistic?

E4.2 Operational Feasibility of the Project

Guiding questions:

- Is the overall project timeline realistic?
- Does the budget account for the resources needed to ensure participation by all individuals concerned, regardless of their abilities (e.g., interpretation services, adapted transportation)?
- Does the project take into account the actual availability of the partner organization?

E5. Team Expertise and Participatory Approach

E5.1 Partner Engagement and Participation Across All Project Phases and Relevance of the Expertise Mobilized

Guiding questions:

- Do team members have the diverse expertise and experience required to achieve the project objectives?

Is the distribution of roles clearly defined, and does it demonstrate active engagement across all phases of the project?

E5.2 Concrete Commitment to Integrating Results and Learning into Practice

Guiding questions:

- Are the methods through which partners plan to integrate project results and learning clearly defined?

How is the commitment of the lead partner concretely demonstrated (e.g., roles and responsibilities, contributions, letters of commitment, etc.)?